



PRE-FILLED WITH GEL
for integrated connections



Electrical performance: CEI EN 50393
(with testing under water head
and water between the cable cores)
Class 2 in accordance with CEI 64-8.

No flame propagation:
CEI 20-35 • IEC 60332-1 • HD405-1
(as applicable)
Low smoke and toxic and corrosiand
corrosive gas emissions

Gel: **UL US**

Casing mix: UL 94-V2

Degree of protection: IP68

Operating temperature **90°**

Installation temperature: **-40°C / +50°C**

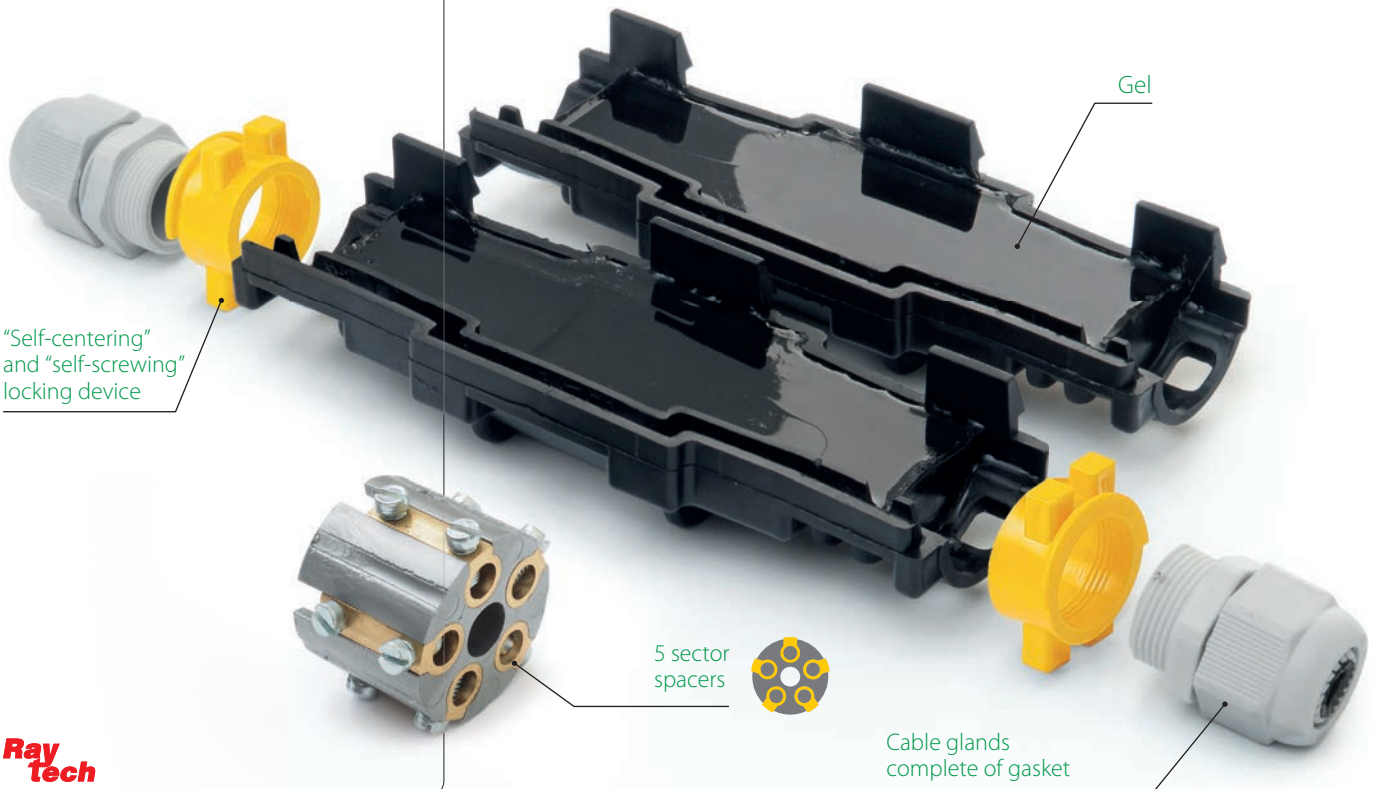
IP68
OFFICIALLY
TESTED | **IMQ**

Rapid Joint IP68

Radial closing gel pre-filled joint for extruded insulation cables up to 1 kV.

Primary insulation, consisting of a cross-linked polymer gel, and the exceptionally robust insulating plastic casing render Class 2 joints in accordance with the definitions contained in standard CEI 64-8. The joint has been tested in accordance with the main international specifications, with repeated flexing and torsion tests and immersion in water, and has been declared as conforming to the mechanical, electrical and sealing specifications required for plastic cable accessories. The joint and its components have an unlimited shelf life, are chemically inert and therefore completely safe. Conductor connections are re-enterable even after long periods of operation. Packaged with self-extinguishing material, flame retardant, for cables at 90°C working temperature. The radial closing system facilitates joint application, making them re-enterable only by means of a tool.

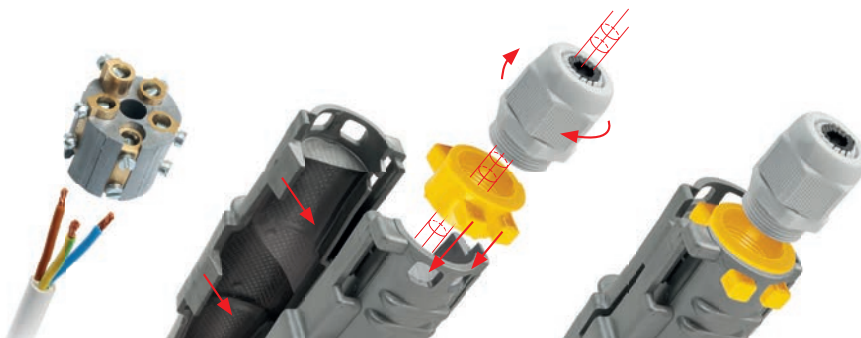
- For straight connections (in line)
- For multi core cables of up to 5 cores
- With suitable spacers
- For all types of application, including submersible
- Wide range of cable formations
- Re-enterable only by means of a tool
- Suitable for 3 core crossing
- Non-toxic, with no expiry date





Product	Formation n°	Configuration IP68			Configuration IPX8		
		Section (mm ²)	Ø cable (mm)	A x B (mm)	Section (mm ²)	Ø cable (mm)	A x B (mm)
Rapid Joint L1,5-IP68		4 - 25			1,5 - 50		
		1,5 - 6			1,5 - 6		
		1,5 - 2,5	8 - 13	155 x 55	1,5 - 6	20,5	105 x 55
		1,5			1,5 - 6		
		1,5			1,5 - 6		
Rapid Joint L6-IP68		25 - 70			2,5 - 150		
		1,5 - 10			2,5 - 10		
		1,5 - 6	12 - 18	245 x 60	2,5 - 10	24	180 x 60
		1,5 - 6			2,5 - 10		
		1,5 - 6			2,5 - 10		
Rapid Joint L10-IP68		70 - 95			120 - 240		
		10 - 16			4 - 25		
		6 - 10	16 - 20	275 x 65	4 - 25	31	210 x 65
		4 - 10			4 - 25		
		4 - 10			4 - 25		
Rapid Joint L25-IP68		120 - 240			120 - 240		
		25			10 - 50		
		16 - 25	21 - 28	410 x 100	10 - 50	31	320 x 100
		16 - 25			10 - 50		
		16 - 25			10 - 50		

For single core cable: do not install the separator with screw connectors and connect with crimp connector.



IP68

- Protection from the ingress of powders, objects up to 1 mm diameter.
- Permanent water immersion.

IPX8

- Permanent water immersion.



New terminal for Rapid Joint L-IP68 with shear bolt connectors.

